

Sneinton St. Stephen's Primary & Nursery School Fire Alarm and Detection System

BREEDON
Fire & Security Ltd

CUSTOMER INFORMATION

**Sneinton St. Stephen's
Primary & Nursery School**
Windmill Lane, Sneinton
Nottingham NG2 4QB

(Part of Transform Trust)

DESCRIPTION

Design, installation and
commissioning of a new fire
alarm and detection system

VALUE

£15,000



INTRODUCTION

Breedon Fire & Security was requested to quote for the design, installation and commissioning of a new addressable category L1 fire alarm and detection system. The fire alarm system was required to consist of:

- Smoke detectors
- Heat detectors
- Manual call points
- Internal sounders
- Visual beacons

The fire alarm also needed to be integrated with the existing door access systems and gas shut-off valves/facility.

“We have had Breedon Electrical undertake a number of minor reactive works for us at the school so when we decided to move forward with this project it made sense for us to speak with their sister company, Breedon Fire & Security. We had received positive referrals from other schools and therefore it came as no surprise we were extremely pleased with the level of detail in their quotation, the thoroughness of their planning and, of course, the actual installation stage.”

— BECKY WILLIS, SCHOOL BUSINESS MANAGER

PROJECT OUTCOMES

Many schools currently operate a ‘closed protocol’ fire detection system which consists of a long term contract with a supplier where servicing and repair costs can be high. Breedon Fire & Security provided Sneinton St. Stephen's Primary and Nursery School with an ‘open protocol’ or ‘addressable’ system which gives the school greater flexibility with future site extensions. The system is also compatible with a wider selection of products, therefore providing better value.

Prior to commencing the project, Breedon Fire & Security provided, as standard, the school with a detailed information pack outlining the engineers scheduled to work at the site, including DBS certification. Full Risk Assessments and Method Statements for the work to be carried out were also supplied in advance.

Breedon Fire & Security designed, installed and commissioned the L1 fire detection system. An L1 system incorporates detection throughout all areas of the site, including areas of circulation, escape routes and areas where a fire may start, the only exceptions are toilets, bathrooms and shower rooms.

The project ran during the 2017 summer shutdown and was completed on schedule. Breedon provided full training on the operation of the system to site staff, including ensuring they were aware of the zones and corresponding fire zone chart.

Breedon Fire & Security also offers full maintenance contracts for the alarm and heat detection system.

Sneinton St. Stephen's Primary & Nursery School Fire Alarm and Detection System



PRODUCT TECHNICAL INFORMATION

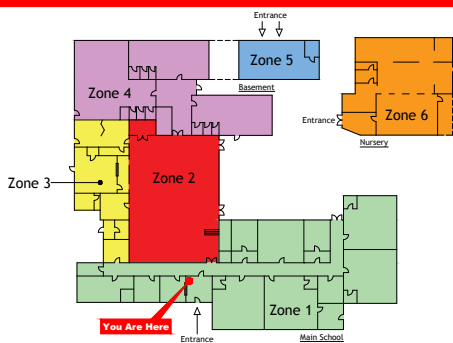
Kentec Syncro AS Single & Two Loop Analogue Addressable Fire Control Panel

Kentec offers the most comprehensive range of conventional, analogue addressable fire detection and extinguishant control panels available. Their custom build service is highly regarded in the industry and utilises their expertise in control panel technology, designing and building a high quality product to exact customer specifications.

Breedon Fire & Security supports the use of this panel for the following reasons:

- Syncro AS is a versatile range of open protocol fire alarm control panels compatible with existing Syncro fire alarm panel technology.
- Available with one or two detection loops capable of hosting up to 126 devices (Apollo), 240 devices (Argus Vega) or 127 devices (Hochiki). Syncro AS uses leading edge microprocessor based electronics to provide a flexible control system with high reliability and integrity.
- Suitable for all small to medium sized fire detection systems, Syncro AS control panels can be expanded and networked to become part of much larger systems if the need arises, therefore providing a future proof solution for any installation.
- With its large graphical display and ergonomic button and indicator layout, the Syncro AS control panel is simple and straightforward to understand for installers, commissioning engineers and end users alike.

FIRE ALARM ZONE PLAN



Breedon Fire and Security Ltd, 15 Clarendon Street, Nottingham, NG1 5HR
Tel: 0115 701 2078 Email: info@breedonfireservices.co.uk Web: www.breedonfireservices.co.uk

SNEINTON PRIMARY SCHOOL - MAIN SCHOOL



Breedon Electrical Services Ltd
info@breedonelectricalservices.co.uk
www.breedonelectricalservices.co.uk

Company Registration Number 9262791



Breedon Fire & Security Ltd
info@breedonfireservices.co.uk
www.breedonfireservices.co.uk

Company Registration Number 10180647